



# UNIVERSITY/COLLEGE

Commercial Windows and Doors | Aluminum | Vinyl | Wood Clad



*photo credit: Phebus Photography*

Products and Project References

[www.QuakerCommercialWindows.com](http://www.QuakerCommercialWindows.com)

# Higher Education

projects are anything but academic.

There are almost 6,000 colleges and universities in the United States. Each campus has its own history...its own appearance...its own ambience. So when a learning institution has a building project, you can bet the building design will be unique. This is where Quaker excels.

While each learning establishment differentiates itself in many ways, almost every university/college construction project contains many of the same traits:

- shorter time frames to complete the job
- an acute attentiveness to delivery schedules
- maximum safety features with full-functionality
- the ability to withstand everyday wear and tear
- high energy-efficiency where needed
- And just as, if not most important, a keen eye kept on allotted budgets

At Quaker, we fully understand all of these aspects and that's why we're so effective when working with colleges and universities. Whether it's a new dormitory or revitalizing an historic campus centerpiece, we have the products and the experience to make your next project pass with flying colors.

Champions Hall  
Student Housing  
Florida State University  
Tallahassee, FL  
Developers: Seminole Boosters, Inc. and  
Capstone Development Partners  
Architect: Elliott Marshall Innes Architects  
Contractor: Cook Brothers Inc.  
Glazing Contractor: American Glass



# The Quaker Difference:

## More than meets the eye.

What distinguishes Quaker from all other window companies isn't always in plain sight. It's The Quaker Difference -- tangible and intangible assets working together to form the most sought-after windows in the market.

- It's a standard of craftsmanship and engineering excellence that we build into every product, distinguishing us from all other window companies in America.
- It's shying away from testing at entry-level, gateway sizes. Instead, we test using exaggerated and even maximum sizing. This ensures the entire scope of a product's sizing will meet the advertised rating.
- It's our "can-do" attitude toward custom projects. Never is a job too custom for Quaker. Our options and accessory choices allow us to do what others can't.
- It's multiple quality checks implemented throughout the manufacturing process to guarantee a paramount product.
- It's our state-of-the-art powder paint facility, one of the largest in the U.S., which allows us to control the quality and consistency of our finish, unlike manufacturers that outsource their painting. As well, it supports our "green" initiatives by employing environmentally-friendly coatings that emit nearly zero VOCs into the air.
- It's employing thicker glass panes which will both lower the amount of stress cracks and raise your ability to control sound intrusion.
- It's professional manufacturing specialists, some with more than 40 years of window experience, providing unparalleled attention to detail from start to finish.
- It's a sales team fully-dedicated to the commercial building sector, working hard to ensure that the product you need is the product you order.
- It's doing more than just selling windows and doors. It's finding the right product solution for your project.



That's *The Quaker Difference*.



The Bridge on Forbes  
Student Housing  
University of Pittsburgh  
Pittsburgh, PA  
Developer: PLDC Land Owner LLC  
Contractor: Rycon Construction  
Glazing Contractor: Specified Systems



800-347-0438



# Aluminum Windows and Doors

Hung | Casement | Project-Out | Slider | Fixed | Doors



Blue Light Living  
Student Housing  
Duke University  
Durham, NC  
Developer: Wilmorite Development  
Architect: MHAworks  
Contractor: LeChase Construction Services  
Comm. Window Distributor: The Coastal Window & Door

## FEATURES:

- CW to AW ratings
- Architecturally extruded aluminum
- All products include a thermally-broken design
- Patented OptiCore™ technology for enhanced thermal efficiency (C600/C605 only)
- Modern, squared sash frame or Traditional/Historic sash frame (*availability varies based on series and model*)
- $\frac{3}{4}$ " to  $1\frac{3}{8}$ " I.G. with warm-edge spacer
- Commercial-grade hardware
- Full line of operating and fixed window models
- Both Sliding and Terrace Door models
- Product line encompasses New Construction and Replacement applications

## BENEFITS:

- Industry-leading thermal efficiencies
- Green initiatives built into every product
- In-house powder coat facility means no lengthy lead times
- Custom color capabilities
- Split color option i.e. separate colors on exterior and interior (C600/C605 only)
- Standard 1" glass package achieves a minimum of 28 STC
- Blinds/Panel option (C600/C605 and E600 only)
- Standard and custom sizing for all models
- Impact and Florida Building approved products

# Aluminum Product Selection Guide

Model	Series	Frame Depth	Structural Test Rating	Test Size	Air Infiltration	Water Resistance	U-Value Range <sup>#</sup>	SHGC Range <sup>#</sup>	STC Range <sup>x</sup>	OITC Range <sup>x</sup>
Casement	C600/C605	4 1/8"	Up to AW100	48" x 84"	<.10	12.11	.19-.30	.11-.44	28-41	23-34
	E600	3 1/4"	Up to AW100	36" x 72"	<.10	12.11	.32-.39	.12-.26	31-44	25-34
	H450	3 1/4"	CW90	36" x 60"	<.30	10	.39-.44	.14-.48	34-37	29-32
	M600	3 1/4"	AW-PG70	36" x 72"	<.10	12.11	.39-.43	.19-.29	29-43	23-31
Project-Out	C600/C605	4 1/8"	Up to AW100	48" x 72"	<.10	12.11	.19-.30	.11-.44	28-41	28-35
	E600	3 1/4"	AW100	60" x 36"	<.10	15.04	.32-.36	.10-.41		
	H450	3 1/4"	CW70	60" x 36"	<.30	10	.40-0.60	.14-.59		
	M600	3 1/4"	AW-PG70	48" x 72"	<.10	12.11	.33-.45	.19-.29		
Project-In	E600	3 1/4"	AW100	60" x 36"	<.10	15.04	.32-.36	.12-.26		
Single Hung	E300	3 1/4"	CW-PG50	56" x 91"	<.30	7.52	.35-.40	.13-.30		
	E500	3 1/4"	AW-PG40	60" x 99"	<.30	8.15	.37-.42	.13-.46		
	H650/H655	4 1/8"	AW-PG60	60" x 99"	<.30	12			31-32	24-26
	T500	3 1/4"	AW-PG50	60" x 99"	<.30	12	.37-.42	.14-.33		
Double Hung	E300	3 1/4"	CW-PG50	47" x 59"	<.30	7.52	.35-.40	.13-.30	34-36	28-31
	E500	3 1/4"	AW-PG40	60" x 99"	<.30	8.15	.37-.42	.13-.46		
Horizontal Slider	E300	3 1/4"	CW-PG50	72" x 60"	<.30	7.52	.35-.40	.14-.31		
	E500	3 1/4"	AW-PG50	99" x 79"	<.30	10.03	.36-.41	.13-.48	33	28
	K200	2 3/8"	CW-PG40	60" x 59"	<.30	6.06	.38-.44	.14-.33	29-51	24-39
Fixed	C600/C605	4 1/8"	AW-PG100	60" x 99"	<.10	15.04	.14-.29	.13-.57	28-44	25-35
	E300	3 1/4"	AW-PG50/CW70	60" x 99"	<.10	10	.25-.31	.16-.37		
	E500	3 1/4"	AW-PG50/CW70	60" x 99"	<.10	10	.25-.31	.16-.37		
	E600	3 1/4"	AW-PG100	60" x 60"	<.10	15.04	.25-.31	.16-.37		
	H450	3 1/4"	AW-PG110	72" x 120"	<.10	15.04	.26-.50	.16-0.69		
	H650	4 1/8"	AW-PG90	60" x 99"	<.10	12				
	K200	2 3/8"	CW50	64" x 71"	<.30	7.52	.27-.32	.16-.37		
	M600	3 1/4"	AW-PG70	60" x 60"	<.10	12.11	.18-.32	.23-.36	32-41	26-31
Terrace Door (inswing)	M600/M605	4 1/2"	AW50	48" x 96"	<.30	10.03	.35-.39	.13-.43		
Terrace Door (outswing)	M600/M605	4 1/2"	AW70	39" x 95"	<.30	12.11	.37-.42	.13-.43	34-43	30-33
Terrace Door (inswing)	M600/M605 (w/ADA threshold)	4 1/2"	AW50	48" x 96"	<.30	10.03	.37-.42	.13-.43		
Terrace Door (outswing)	M600/M605 (w/ADA threshold)	4 1/2"	AW50	48" x 96"	<.30	10.03	.37-.42	.13-.43		

\*-Ranges based on multiple Low-E/Argon I.G. combinations

<sup>x</sup>-Ranges based on multiple I.G. combinations

All ratings listed are NAFS certified. Periodic re-certification testing is required thus data shown may vary slightly.

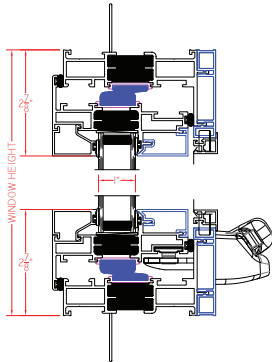
# Aluminum Product

## Series and Models

### Casement

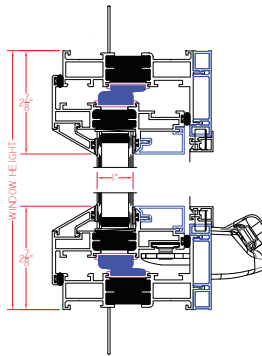
#### C600 Series (AW70)

Shown with nailing fin, roto hardware, and modern, square exterior glazing



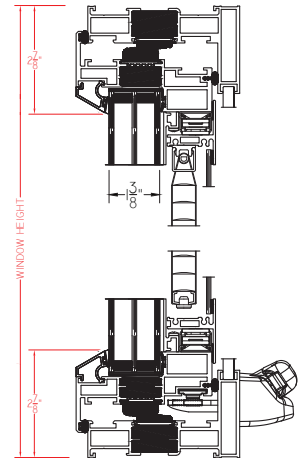
#### C605 Series (AW70)

Shown with nailing fin, roto hardware, and traditional, sloped exterior glazing



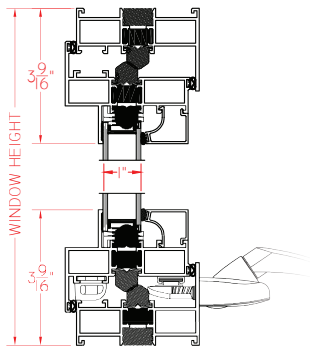
#### C605 Series with blinds/panel(AW70)

Shown without nailing fin, with optional triple-pane I.G., roto hardware, beveled exterior glazing



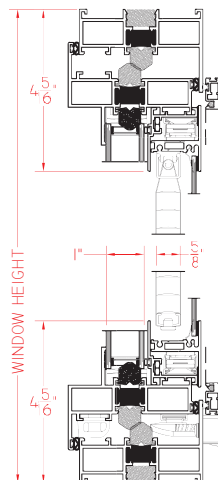
#### E600 Series (AW70)

Shown with roto hardware

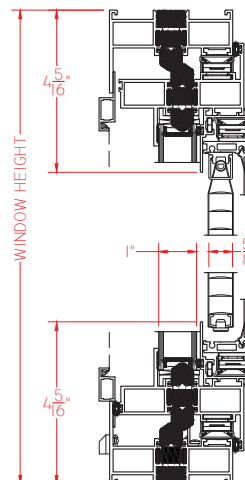


#### E600 Series with blinds/panel(AW70)

Outswing model  
shown without nail fin, with roto hardware and optional blind/panel

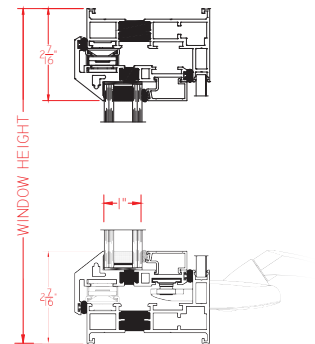


Inswing Model  
shown without nail fin, with roto hardware and optional blind/panel



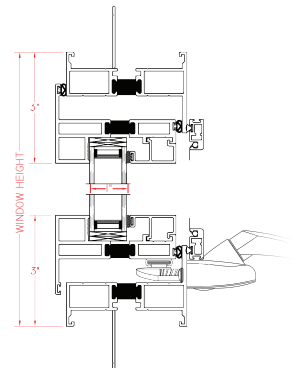
#### H450 Series (AW70)

Shown with roto hardware



#### M600 Series (AW70)

Shown with roto hardware and optional nailing fin



McKean Hall and Pennypacker Hall  
Student Housing  
Penn State University  
State College, PA  
Architect: Mackey Mitchell Architects  
Contractor: Clayco  
Glazing Contractor: Nittany Building Spec.



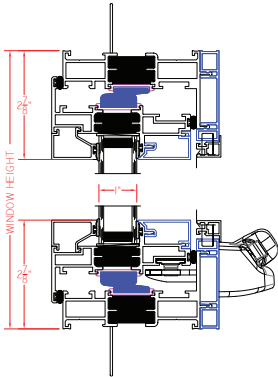
photo credit: DLA+ Arch. & Design / dlaplus.com

# Aluminum Product Selection Guide

## Project-Out

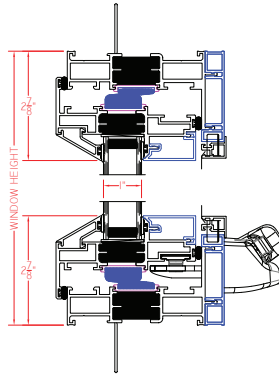
### C600 Series (AW70)

Shown with nailing fin, roto hardware, and modern, square exterior glazing



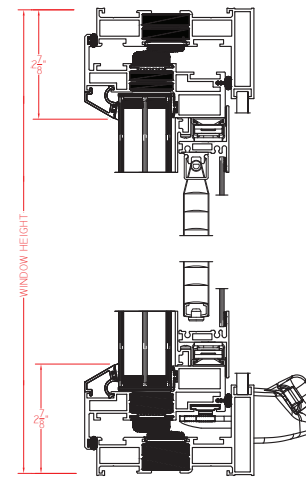
### C605 Series (AW70)

Shown with nailing fin, roto hardware, and beveled exterior glazing



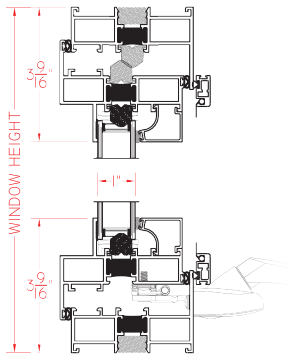
### C605 Series with blinds/panel (AW70)

Shown without nailing fin, triple-pane I.G., roto hardware, beveled exterior glazing and optional blind/panel



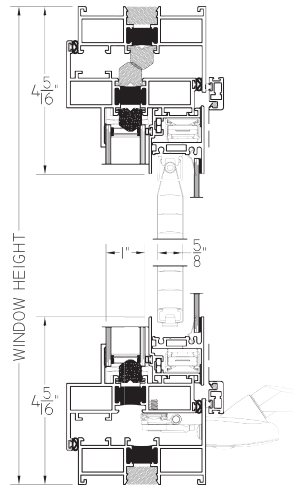
### E600 Series (AW100)

Shown with 4-bar roto hardware



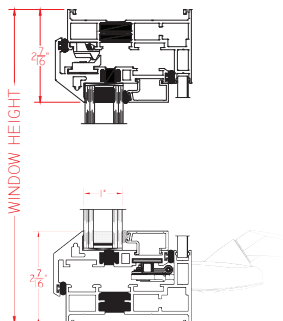
### E600 Series with blinds/panel (AW100)

Shown with roto hardware and optional blind/panel



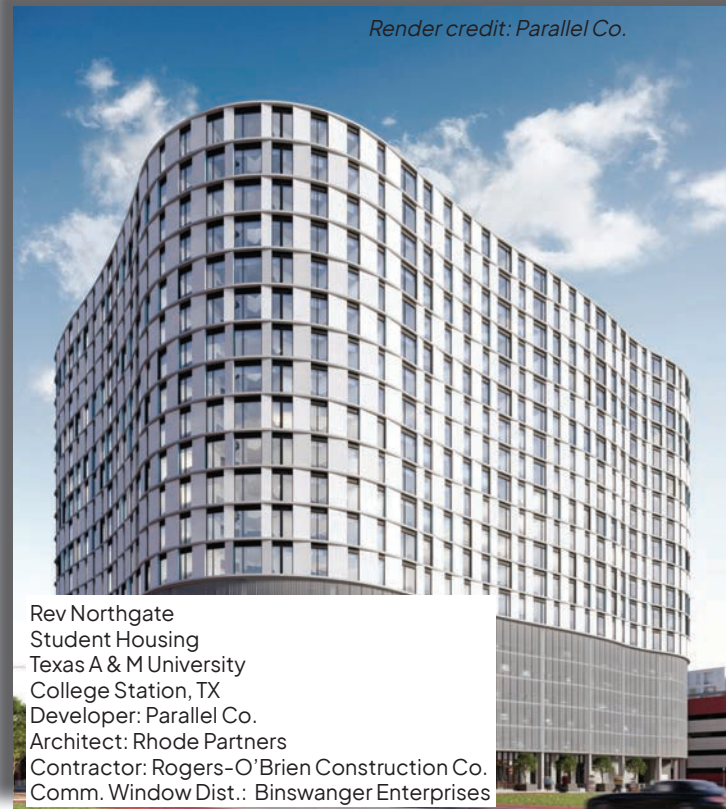
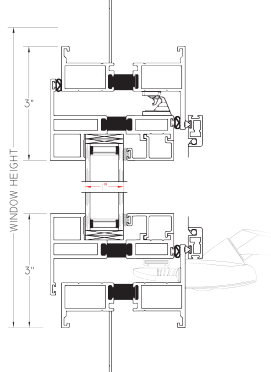
### H450 Series (AW70)

Shown with roto hardware



### M600 Series (AW70)

Shown with 4-bar roto hardware and nail fin



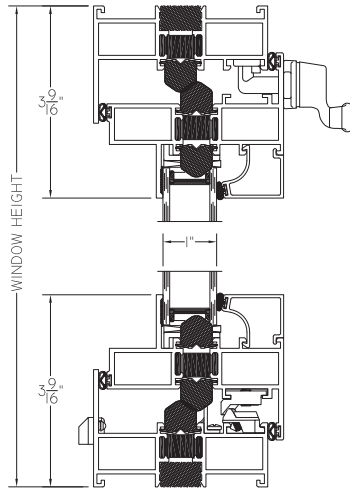
Render credit: Parallel Co.

Rev Northgate  
Student Housing  
Texas A & M University  
College Station, TX  
Developer: Parallel Co.  
Architect: Rhode Partners  
Contractor: Rogers-O'Brien Construction Co.  
Comm. Window Dist.: Binswanger Enterprises

# Aluminum Product Selection Guide

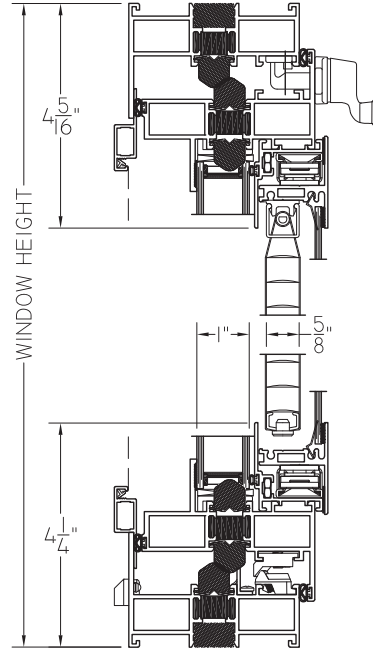
## Project-In

E600 Series (AW100)



E600 Series with blinds/panel(AW100)

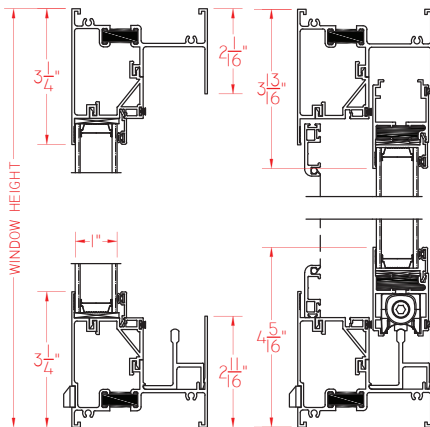
*Shown with optional blind/panel*



## Horizontal Slider

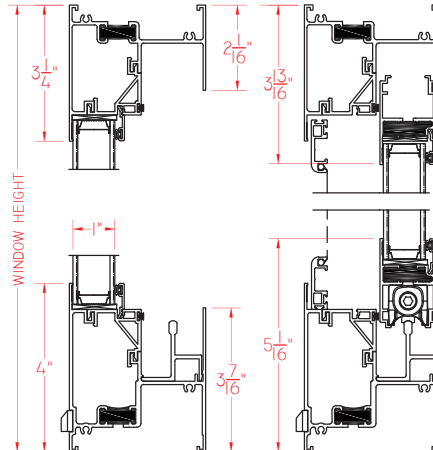
E300 Series (CW50)

*Single Slider model shown*



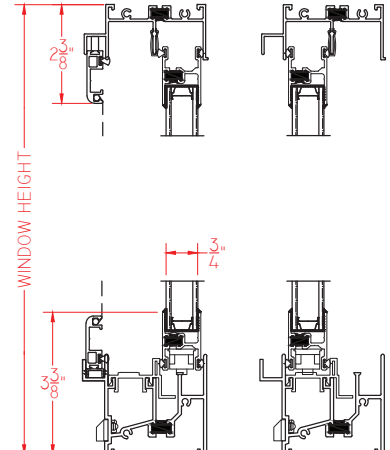
E500 Series (AW50)

*Single Slider model shown*



K200 Series (CW40)

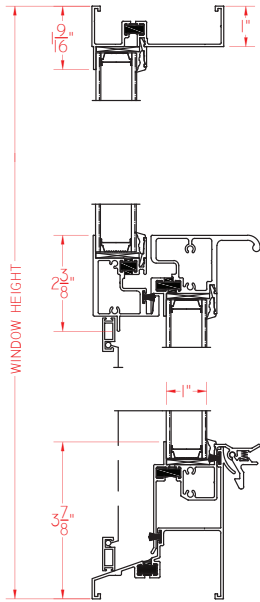
*Single Slider model shown*



# Aluminum Product Selection Guide

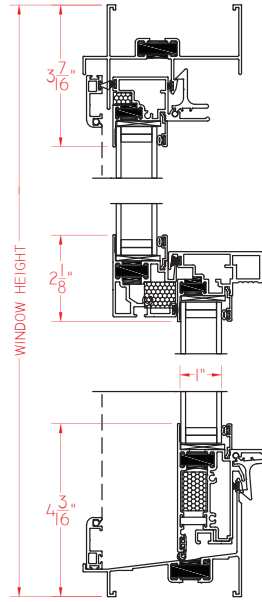
## Single Hung/Double Hung

T500 Series (AW50)



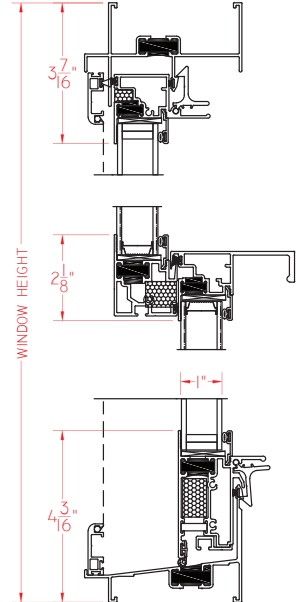
E300 Series (CW50)

*Double Hung model shown*

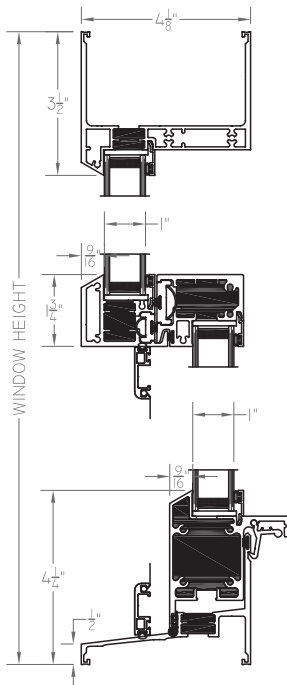


E500 Series (AW40)

*Double Hung model shown*



H650 Series (AW60)



Portland Flats  
Mixed-Use Facility  
Catholic University of America Student Housing  
Washington, DC  
Developers: Catholic University, The Bozzuto Group,  
and Abdo Development  
Architect: KTGy  
Contractor: AGM Contracting, Inc.  
Glazing Contractor: Architectural Glass & Metal



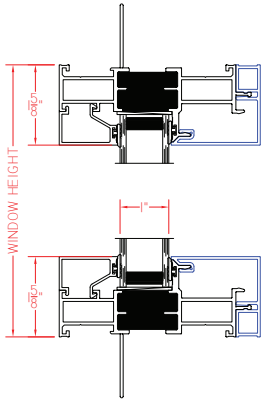
*photo credit: Waring Photography*

# Aluminum Product Selection Guide

## Fixed

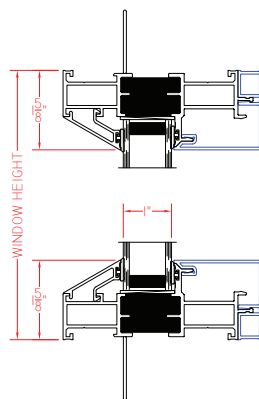
### C600 Series (AW100)

Shown with nailing fin and modern, square exterior glazing



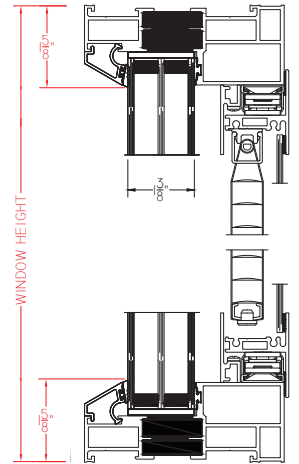
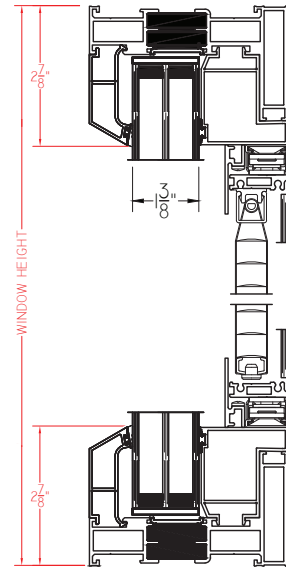
### C605 Series (AW100)

Shown with nailing fin and traditional, sloped exterior glazing

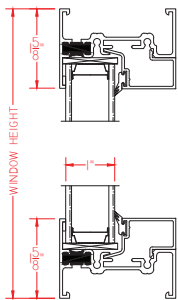


### C605 Series with blinds/panel (AW100)

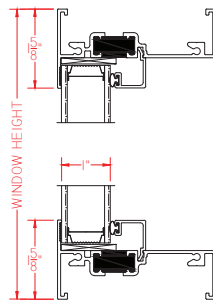
Wide Rail  
Shown with traditional sloped exterior glazing, optional triple pane I.G. and optional blinds/panel



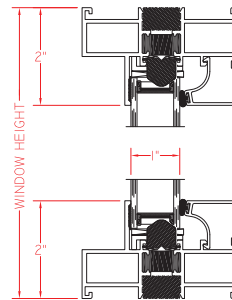
### K200 Series (CW50)



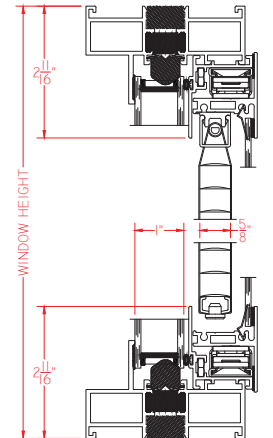
### E300 Series (AW50/CW70)



### E600 Series (AW100)

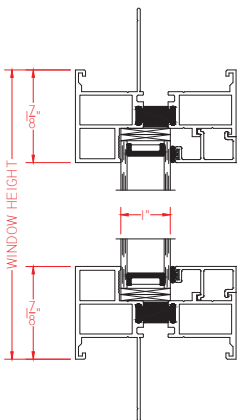


### E600 Series with blinds/panel (AW80)

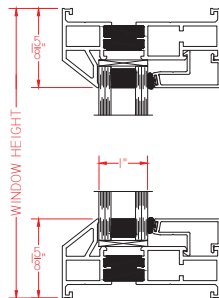


### M600 Series (AW70)

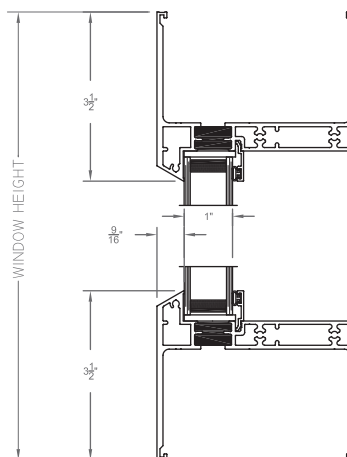
Shown with optional nailing fin



### H450 Series (AW110)



### H650 Series (AW90)

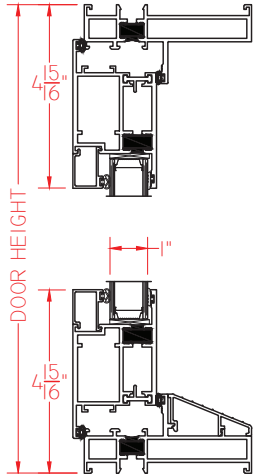


# Aluminum Product Selection Guide

## Terrace Doors (Standard Sill)

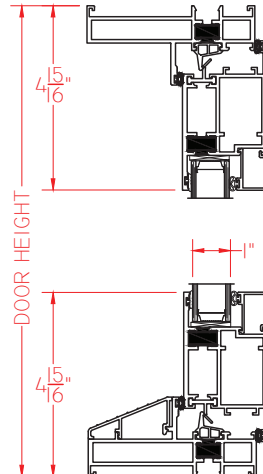
### M600 Outswing Series (AW70)

Shown with standard 2 1/8" sill



### M600 Inswing Series (AW50)

Shown with standard 2 1/8" sill

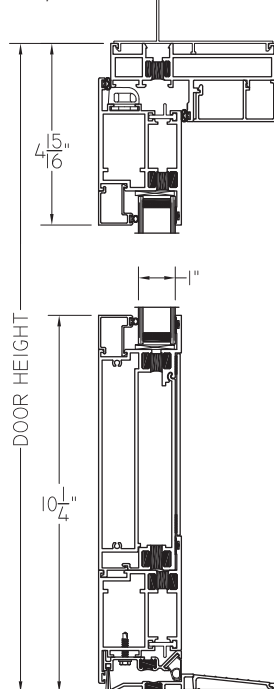


Metro Park East  
Student Housing  
University of Minnesota  
Minneapolis, MN  
Architect: Cube3 Studio  
Contractor: Weiss Builders  
Comm. Window Dist.: Lampert Lumber

## Terrace Doors (ADA Threshold)

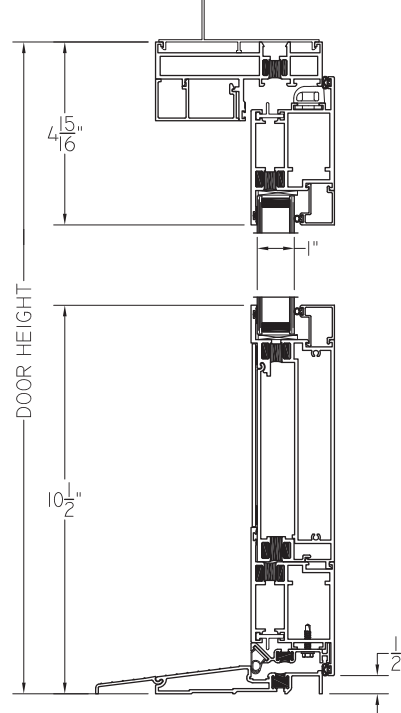
### M600 Outswing Series (AW50)

Shown with ADA threshold, 10" bottom rail, and optional nail fin



### M600 Inswing Series (AW70)

Shown with ADA threshold, 10" bottom rail, and optional nail fin



# Vinyl

## Windows and Doors

Hung | Casement | Project-Out | Slider | Fixed | Doors



Woodland Glen Phase IV  
Student Housing  
University of Kentucky  
Lexington, KY  
Architect: Sherman Carter Barnhart  
Contractor: Messer Construction  
Dealer: Kidd Glass, Inc.



*photo credit: Phebus Photography*

### FEATURES:

- LC to CW Ratings
- 100% pure uPVC vinyl
- Fusion welded corners
- .060 Vinyl thickness
- Metal reinforcements in critical areas
- Amesbury/Truth® operating hardware
- Block & Tackle balancers on all hung units
- 3/4" to 1 3/8" I.G. with warm-edge spacer
- Full line of operating and fixed window models
- Product line encompasses New Construction and Replacement applications

### BENEFITS:

- Value added alternative to traditional aluminum windows
- Industry-leading thermal efficiencies
- Green initiatives built into every product
- Impact and Florida Building approved products
- Standard I.G. achieves a minimum of 28 STC
- Custom painted exterior color capabilities\*
- V300 Series Casement and Fixed models are PHIUS certified
- Standard and custom sizing for all models

\*-Availability may vary



[www.QuakerCommercialWindows.com](http://www.QuakerCommercialWindows.com)

# Vinyl Product Selection Guide

Model	Series	Frame Depth	Structural Test Rating	Test Size	Air Infiltration	Water Resistance	U-Value Range <sup>#</sup>	SHGC Range <sup>#</sup>	STC Range <sup>x</sup>	OITC Range <sup>x</sup>
Casement	V250	3 1/4"	LC30	36" x 72"	<.30	7.52	.23-.26	.11-.43		
	V300	3 1/4"	CW50	36" x 78"	<.30	7.5	.23-.27	.11-.27	29-41	29-34
Project-Out	V250	3 1/4"	LC35	36" x 72"	<.30	7.52	.23-.27	.12-.28		
	V300	3 1/4"	CW50	60" x 32"	<.30	7.5	.24-.28	.11-.41	35	29
Single Hung	V250	3 1/4"	LC35	36" x 84"	<.30	7.52	.25-.30	.14-.51	29-35	24-29
	V300	3 1/4"	CW50		<.30	7.52	as low as 0.25	as low as 0.25		
Double Hung	V250	3 1/4"	LC35	36" x 84"	<.30	7.52	.25-.30	.14-.50		
Horizontal Slider	V250	3 1/4"	LC35	63" x 44"	<.30	7.52	.24-.30	.14-.50		
	V300	3 1/4"	CW50		<.30	7.52	as low as 0.25	as low as 0.25		
Fixed	V250	3 1/4"	LC35	56" x 56"	<.30	7.52	.22-.28	.15-.53		
	V300	3 1/4"	CW50	78" x 78"	<.30	7.5	.21-.27	.15-.35	35	29
Sliding Door	V250	5 5/8"	LC40	96" x 96"	<.30	7.52	.24-.30	.14-.51	31-35	24-28

\*-Ranges based on multiple Low-E/Argon I.G. combinations

<sup>x</sup>-Ranges based on multiple I.G. combinations

All ratings listed are NAFS certified. Periodic re-certification testing is required thus data shown may vary slightly.

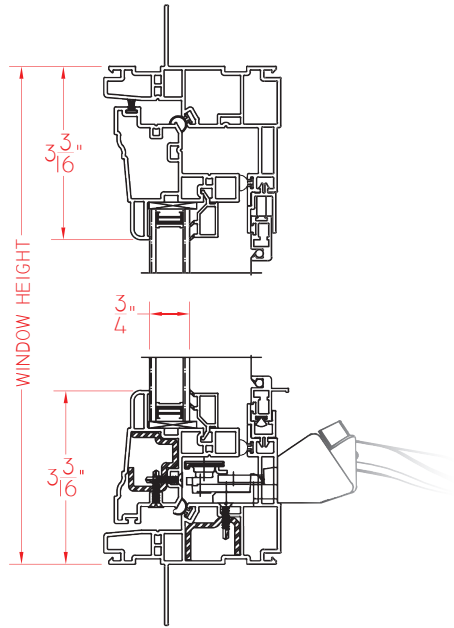
McConnell Hall  
Student Housing  
The Ohio State University-Newark  
Newark, OH  
Architect: Design Group  
Contractor: The Whiting-Turner Contracting Co.  
Glazing Contractor: Northern Window & Door



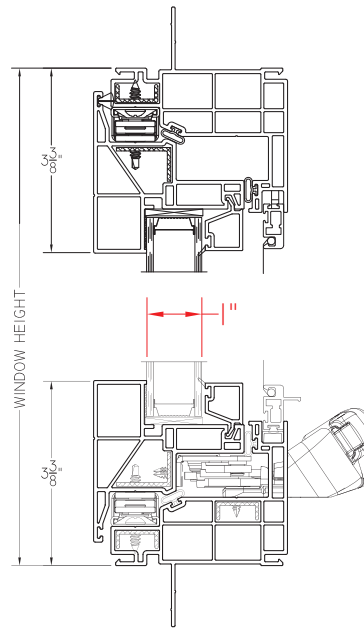
# Vinyl Product Selection Guide

## Casement

V250 Series (LC30)

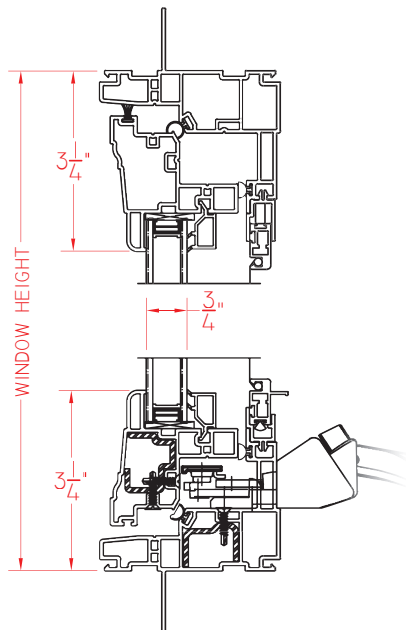


V300 Series (CW50)

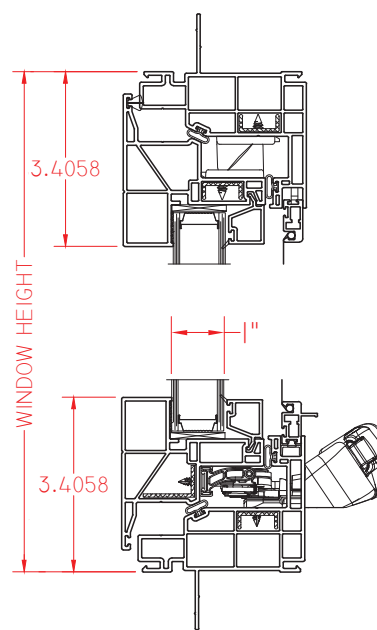


## Project-Out

V250 Series (LC35)



V300 Series (CW50)



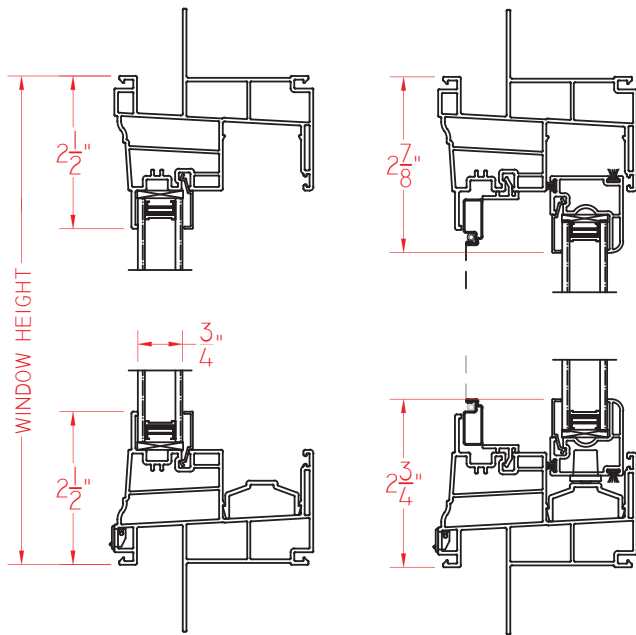
# Vinyl

## Selection Guide

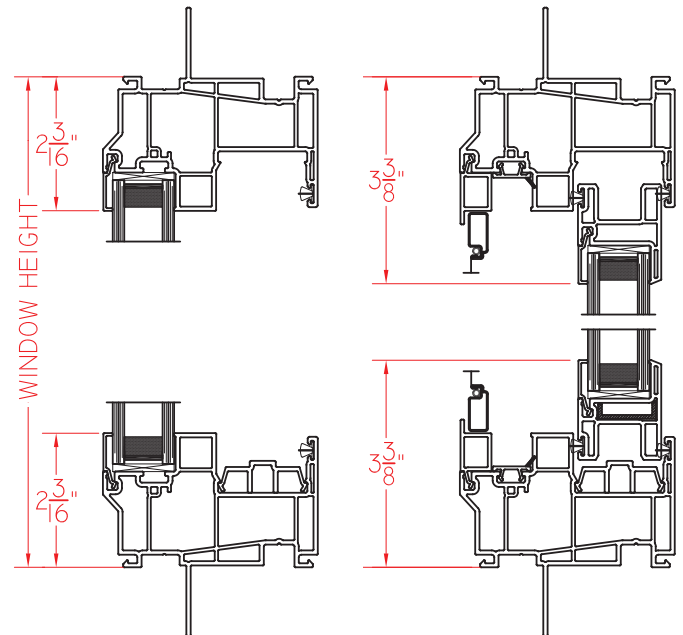
### Horizontal Slider

#### V250 Series (LC35)

Single Slider model shown



#### V300 Series (CW50)



Entrepreneurship Living Learning Community  
Mixed-Use Facility  
Bowie State University  
Bowie, MD  
Architect: Design Collective  
Contractors: Balfour Beatty & Smoot Construction  
Glazing Contractor: Merit Commercial Windows



photo credit: Prince George's Suite Magazine & Media

800-347-0438

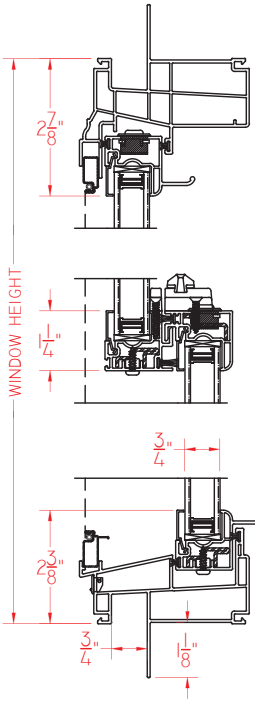


# Vinyl Product Selection Guide

## Single Hung/Double Hung

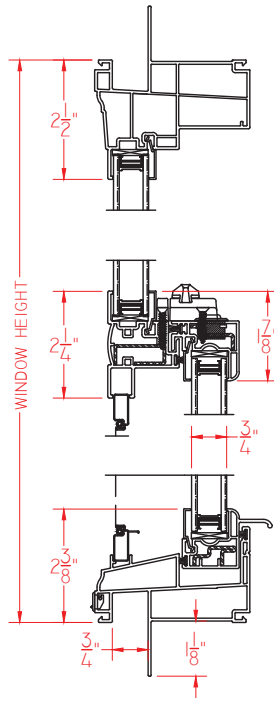
V250 Series (LC35)

*Double Hung model shown*

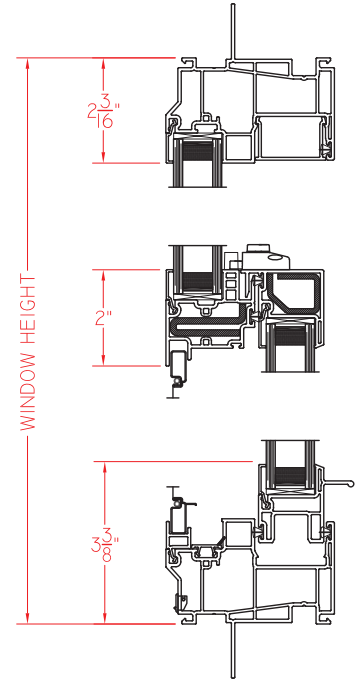


V250 Series (LC35)

*Single Hung model shown*



V300 Series (CW50)



Garner Crossing  
Student Housing  
University of Oklahoma  
Norman, OK  
Developer: CSO Development  
Architect: Red Prairie Design Group  
General Contractor: Principal Construction  
Comm. Window Distributor: Comanche Bldg. Sply.

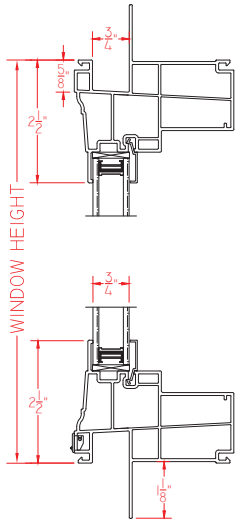


# Vinyl Product Selection Guide

## Fixed

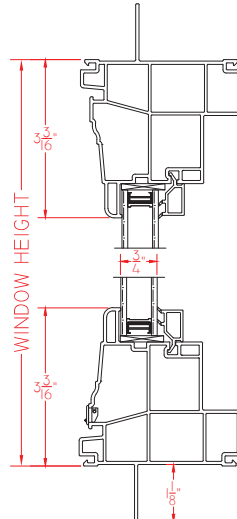
### V250 Series (LC35)

Sash set model to match all hung and horizontal sliding units



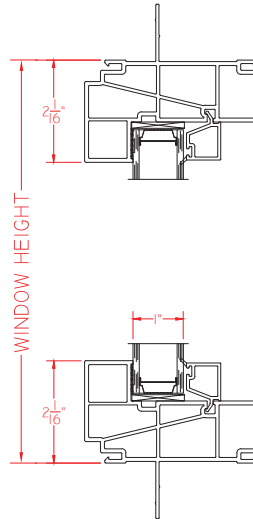
### V250 Series (LC35)

Sash set model to match all casement and project-out units



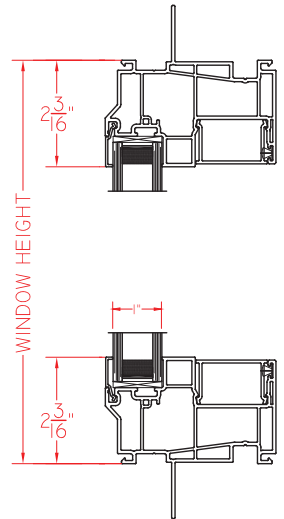
### V300 Series (CW50)

Sash set model to match all casement and project-out units



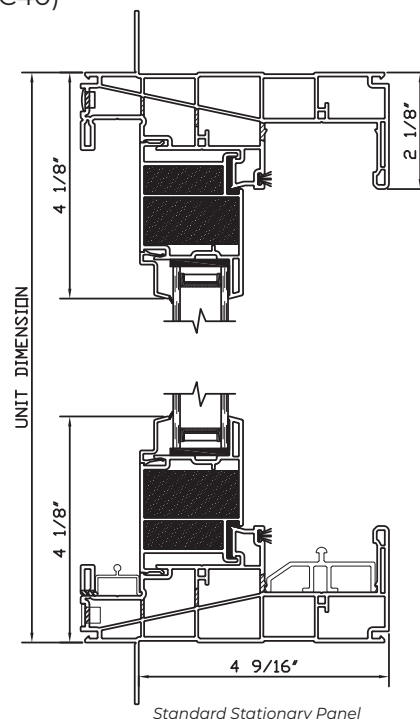
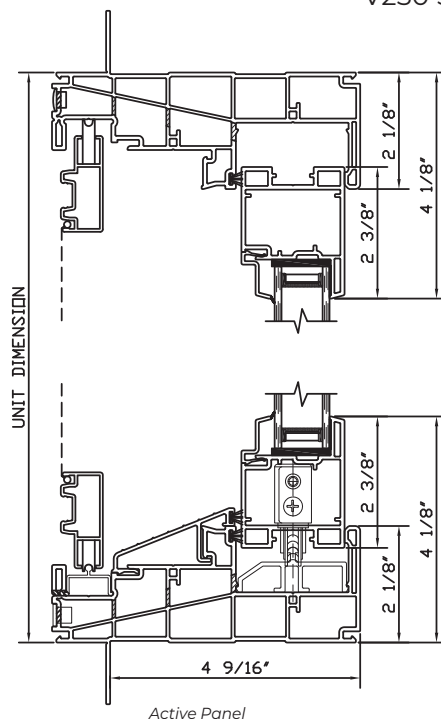
### V300 Series (CW50)

Sash set model to match all hung and horizontal sliding units



## Sliding Door

### V250 Series (LC40)



# References

See more of Quaker in recently completed projects on these campuses

## ALABAMA

Troy University - Troy

## ARKANSAS

Arkansas Baptist College - Little Rock  
John Brown University - Siloam Springs  
Southern Arkansas University - Magnolia

## CALIFORNIA

Cal-State University - Northridge  
Vanguard University - Costa Mesa

## ILLINOIS

University of Chicago - Chicago  
Wheaton College - Wheaton

## INDIANA

Calumet College of St. Joseph - Whiting  
Earlham College - Richmond  
Holy Cross College - South Bend  
Indiana University - Bloomington  
Purdue University - West Lafayette  
St. Mary's University - South Bend  
Trine University - Angola

## IOWA

Iowa State University - Ames

## KANSAS

Ottawa University - Ottawa  
Washburn University - Topeka  
University of Kansas - Lawrence

## KENTUCKY

Berea College - Berea

## LOUISIANA

Louisiana State University - Baton Rouge

## MARYLAND

Maryland Institute College of Art - Baltimore  
University of Maryland Pharmacy School - Baltimore



Lark Austin  
Student Housing  
University of Texas  
Austin, TX  
Developer: Parallel Company  
Architect: Rhode Partners  
Glazing Contractor: McInerney & Assoc.

photo credit: The Scion Group

## MASSACHUSETTS

Boston University - Boston

## MICHIGAN

Grand Valley State University - Grand Rapids  
Saginaw Valley State University - Saginaw

## MISSISSIPPI

Millsaps College - Jackson  
Mississippi College - Clinton  
Mississippi Gulf Coast Comm. College - Perkinston  
William Carey University - Hattiesburg

## MISSOURI

Central Methodist University - Fayette  
Culver-Stockton College - Canton  
Harris-Stowe State University - St. Louis  
University of Missouri - Columbia  
Missouri State University - Springfield  
Missouri Univ. of Science & Technology - Rolla  
Moberly Area Community College - Moberly  
Southeast Missouri State University - Cape Girardeau  
Stephens College - Columbia



Core Apartments  
Student Housing  
Washington University  
St. Louis, MO  
Developer: DFC Group, Inc.  
Architect: The Lawrence Group  
General Contractor: Tarlton Corp.  
Commercial Window Dealer: Dalco, Inc.



Interdisciplinary Stem Education Building  
Academic Facility  
University of Georgia  
Athens, GA  
Architect: HOK  
Contractor: Holder Construction  
Glazing Contractor: Custom Enclosure Solutions

photo credit: Holder Construction

## NEBRASKA

Chadron State College - Chadron

## NEW JERSEY

Rutgers University - Newark

## NEW YORK

Colgate University - Hamilton

Stony Brook University - Stony Brook

## NORTH CAROLINA

Elon University - Elon

North Carolina State University - Raleigh

Western Carolina University - Cullowhee

## OHIO

University of Dayton - Dayton

Kenyon College - Mt. Vernon

Ohio University - Athens

Ohio Dominican University - Columbus

## OKLAHOMA

Northwest Oklahoma State University - Alva

University of Oklahoma - Norman

## PENNSYLVANIA

Drexel University - Philadelphia

Juniata College - Huntingdon

University of Pittsburgh - Bradford

Shippensburg University - Shippensburg

Washington & Jefferson College - Washington

## SOUTH CAROLINA

Converse University - Spartanburg

## TENNESSEE

East Tennessee State University - Johnson City

Freed-Hardman University - Henderson

University of Memphis - Memphis

Middle Tennessee State Univ. - Murfreesboro

Milligan College - Johnson City

University of Tennessee - Martin

## TEXAS

Texas College - Tyler

## VIRGINIA

George Mason University - Fairfax

James Madison University - Harrisonburg

Virginia Commonwealth University - Richmond

Virginia Military Institute - Lexington

## WASHINGTON DC

The George Washington University

Georgetown University

## WEST VIRGINIA

Marshall University - Huntington

## WISCONSIN

Marquette University - Milwaukee

University of Wisconsin - Madison



Midtown Plaza  
Student Housing  
University of Illinois  
Champaign, IL  
Developer: The University Group  
Architect: Kennedy Hutson Associates  
Contractor: Wells & Wells Construction  
Comm. Window Distributor: LS Building Supply




# UNIVERSITY/COLLEGE

Find more information on Quaker windows and doors



 [www.QuakerCommercialWindows.com](http://www.QuakerCommercialWindows.com)

 1-800-347-0438

 [commercial@quakerwindows.com](mailto:commercial@quakerwindows.com)



Made in America: All Quaker products are designed and manufactured in the United States at our state-of-the-art facilities in Eldon, MO (above) and Freeburg, MO.



March, 2023 V1



## On the Cover:

Limestone Hall 1  
Student Housing  
University of Kentucky  
Lexington, KY  
Architect: Sherman Carter Barnhart  
Contractor: Messer Construction  
Glazing Contractor: Kidd Glass, Inc.